

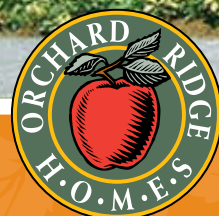
THE
SUGAR MAPLE

1,379 SQ. FT.

(WITH ADDITIONAL 305 SQ. FT. OF OPT. FINISHED BASEMENT)



ARTIST'S CONCEPT



ELEVATION B

TWO STOREY

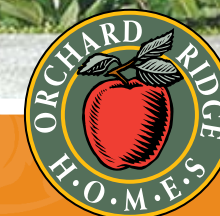
THE
SUGAR MAPLE

1,406 SQ. FT.

(WITH ADDITIONAL 305 SQ. FT. OF OPT. FINISHED BASEMENT)

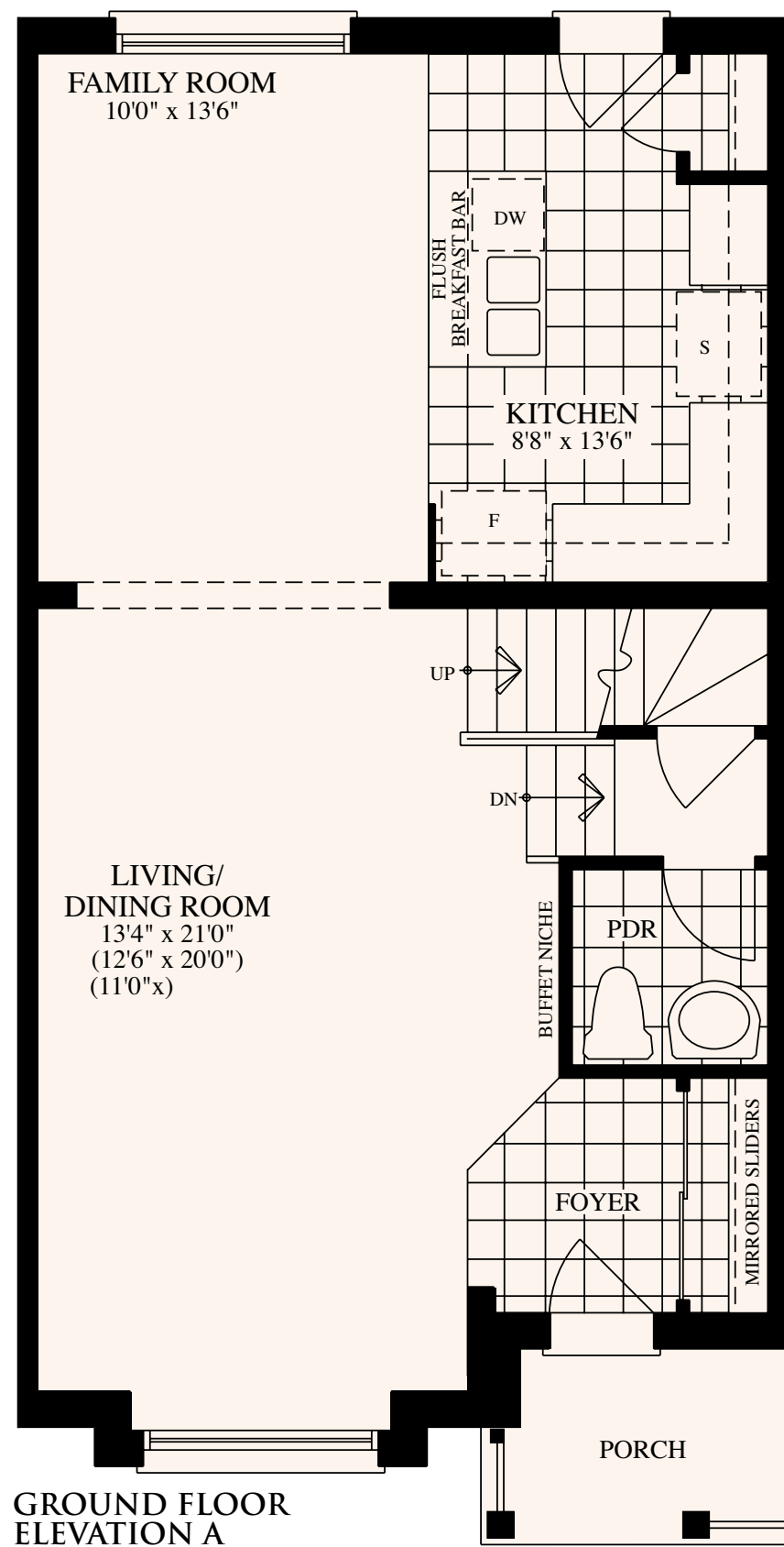


ARTIST'S CONCEPT

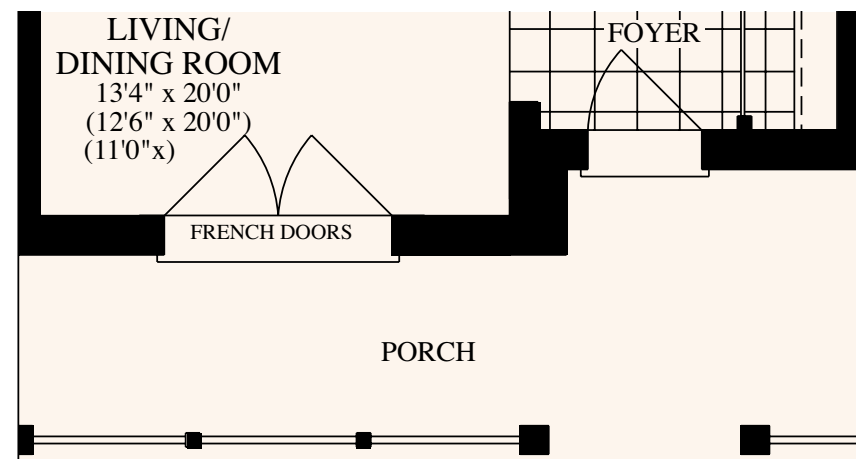


ELEVATION A

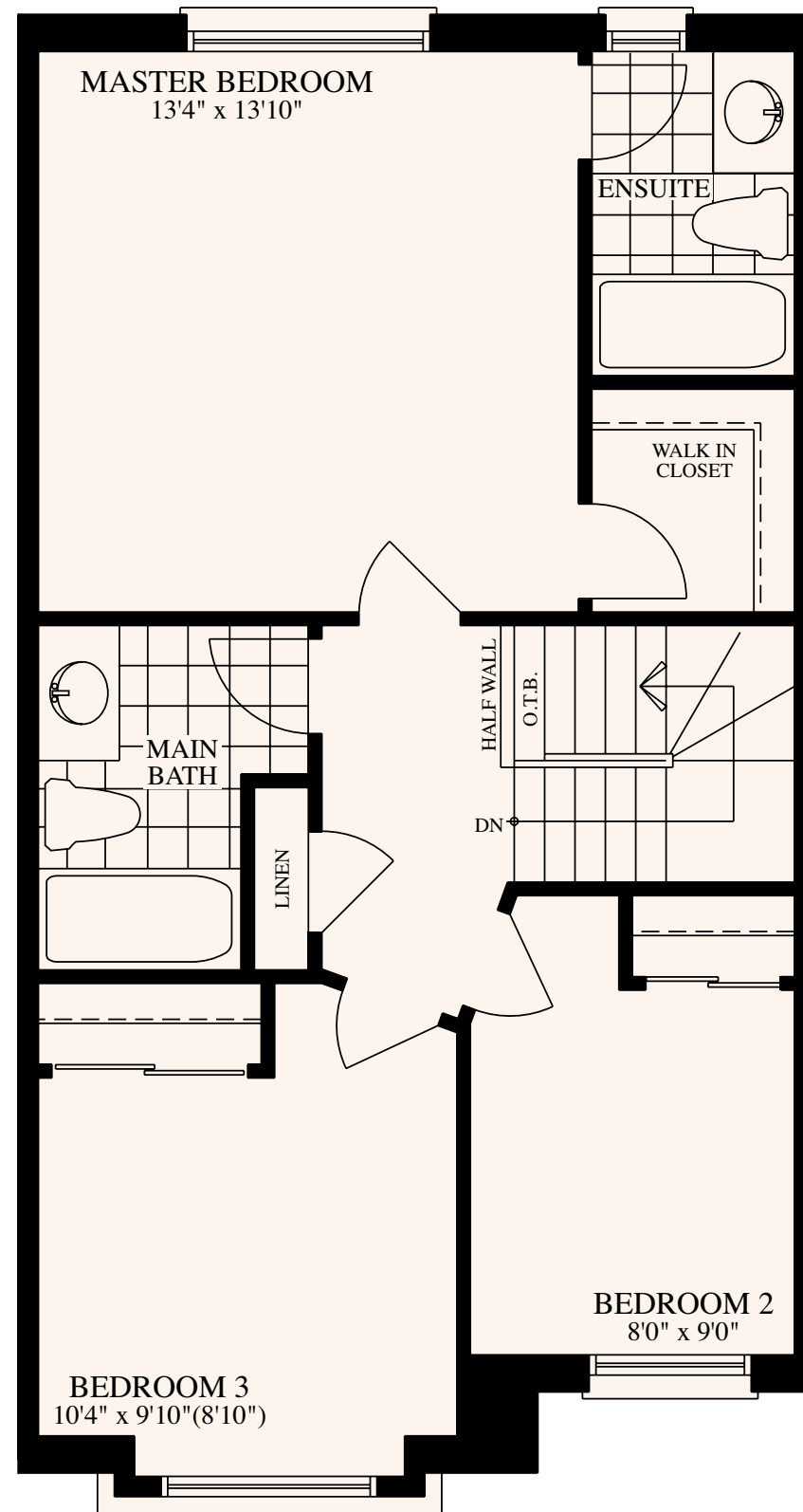
TWO STOREY



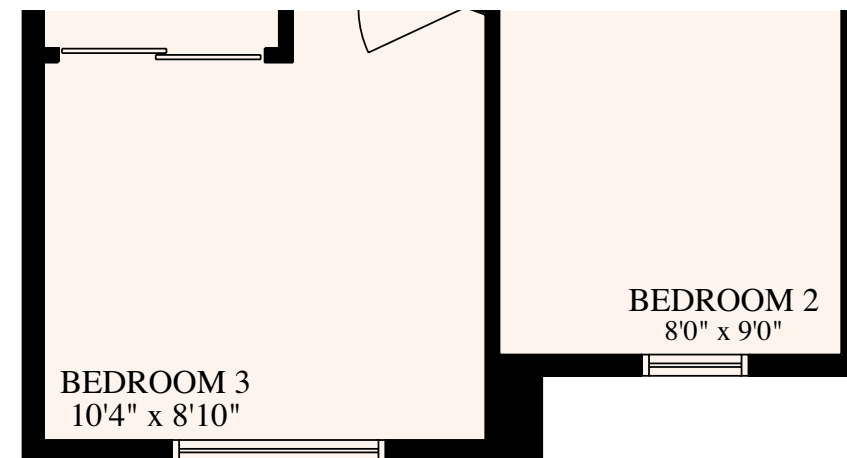
GROUND FLOOR ELEVATION A



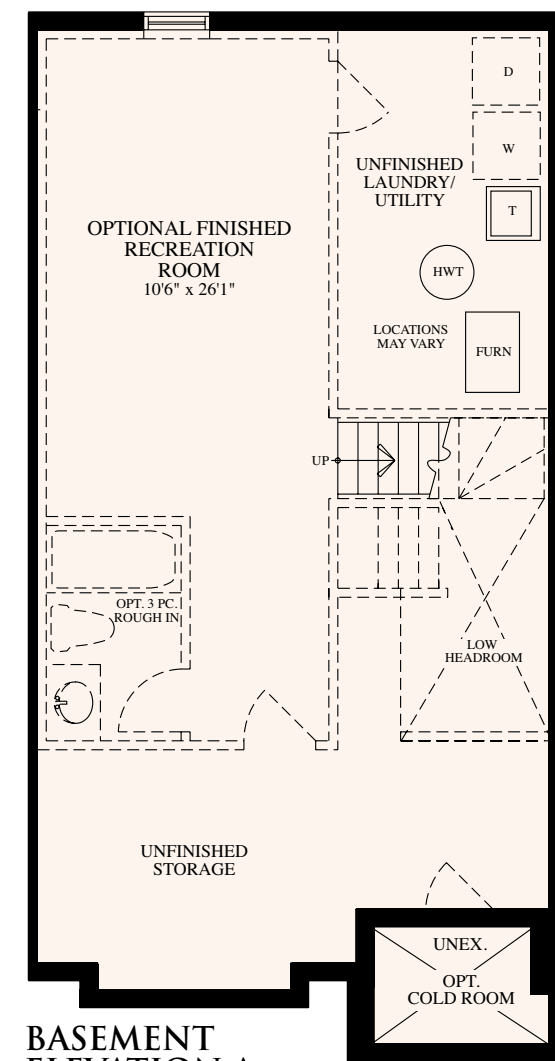
GROUND FLOOR ELEVATION B



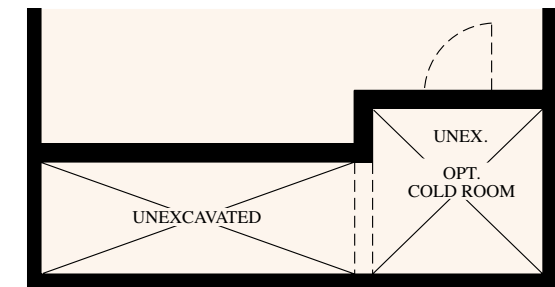
SECOND FLOOR ELEVATION A



SECOND FLOOR ELEVATION B



BASEMENT ELEVATION A



BASEMENT ELEVATION B

This home welcomes you with a large front porch and an oversized front entry closet as you step into the foyer. The open main floor has ample light from large windows both front and back. The kitchen island provides great work space around the sink area. The master retreat features a private ensuite and walk-in closet. The optional finished basement level offers expanded living for multiple uses.



All illustrations are Artist's Concept. All Plans and dimensions are approximate and subject to change without notice. Note that plans and room dimensions may vary according to elevation. E. & O. E. A2T-1

The Energy Star® mark is administered and promoted in Canada by Natural Resources Canada. Used with permission.

THE SUGAR MAPLE

TWO-STOREY - 1,406/1,379 SQ. FT.
(WITH ADDITIONAL 305 SQ. FT. OF OPT. FINISHED BASEMENT)