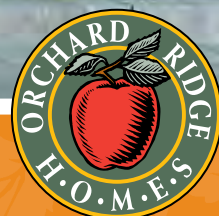


THE
WILD PLUM II (END)

1,842 SQ. FT.

(WITH ADDITIONAL 759 SQ. FT. OF OPT. FINISHED BASEMENT)



ARTIST'S CONCEPT

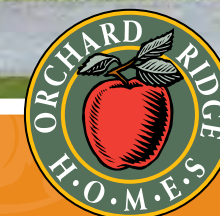
ELEVATION B

TWO STOREY

THE
WILD PLUM II (END)

1,854 SQ. FT.

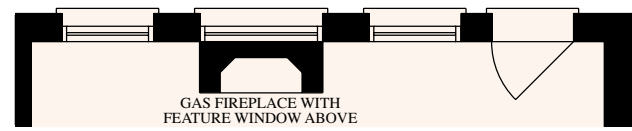
(WITH ADDITIONAL 759 SQ. FT. OF OPT. FINISHED BASEMENT)



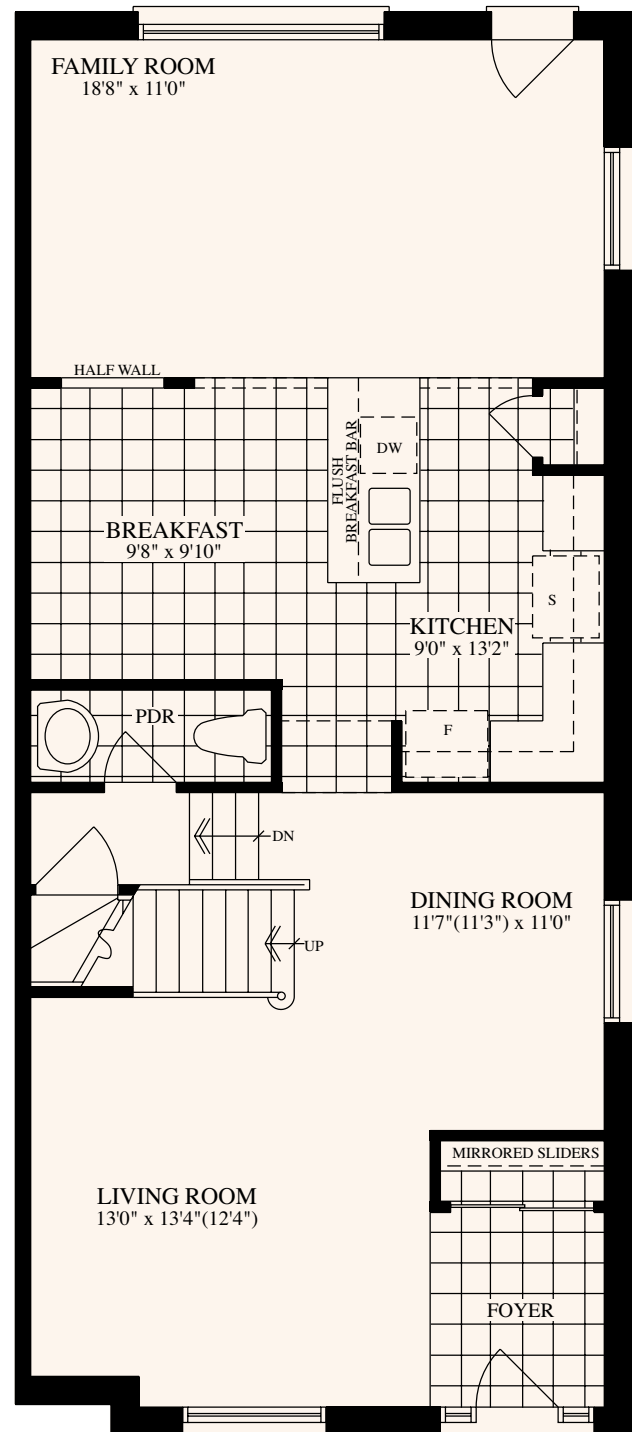
ARTIST'S CONCEPT

ELEVATION A

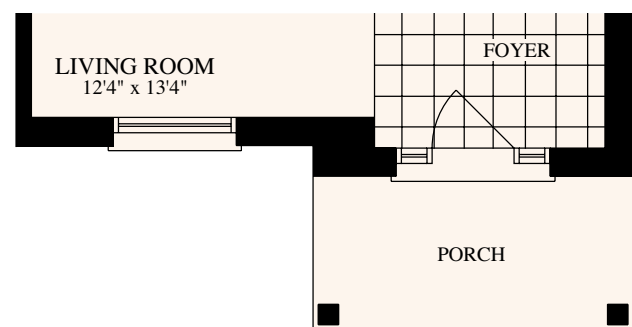
TWO STOREY



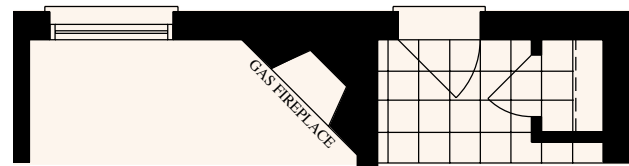
PARTIAL GROUND FLOOR FOR OPTIONAL FIREPLACE



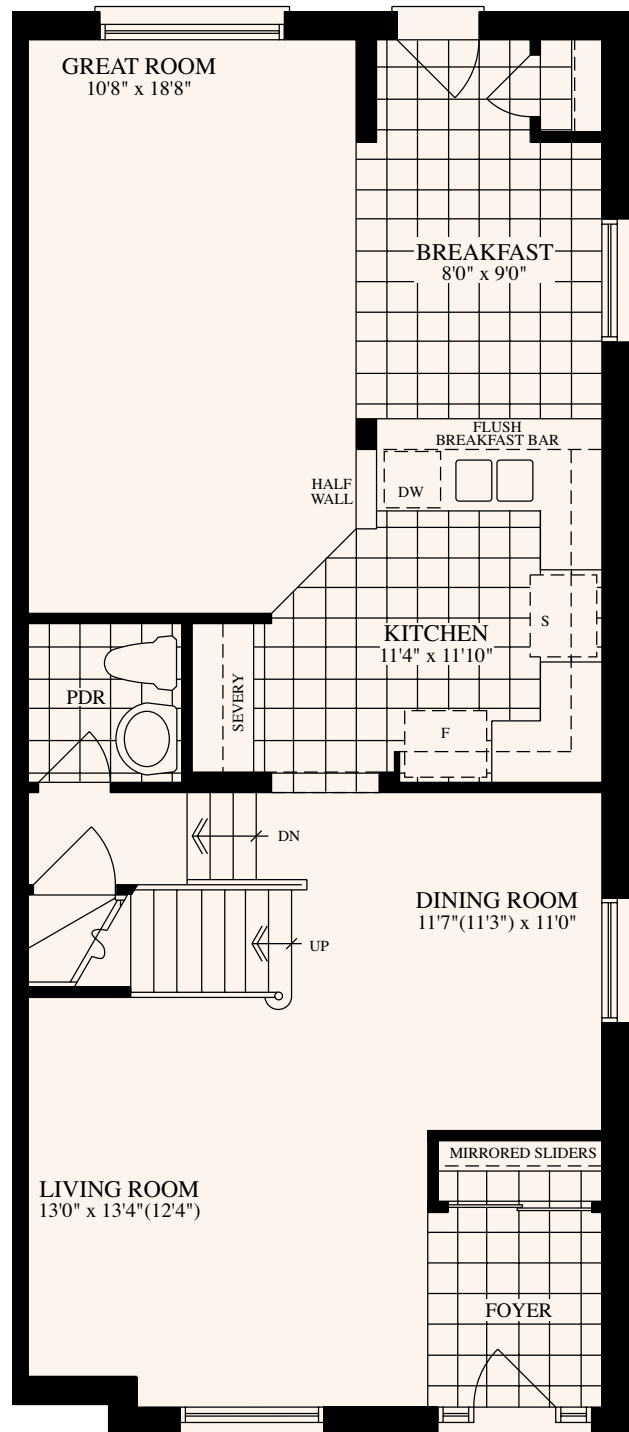
GROUND FLOOR ELEVATION A END



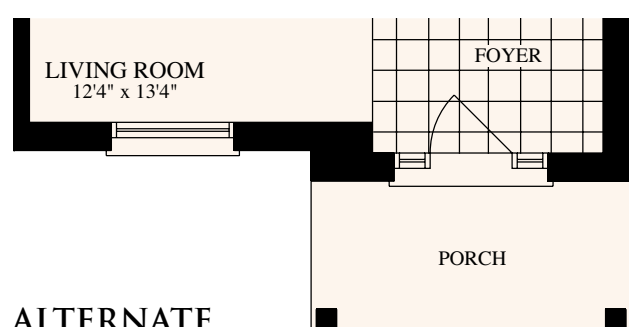
GROUND FLOOR ELEVATION B END



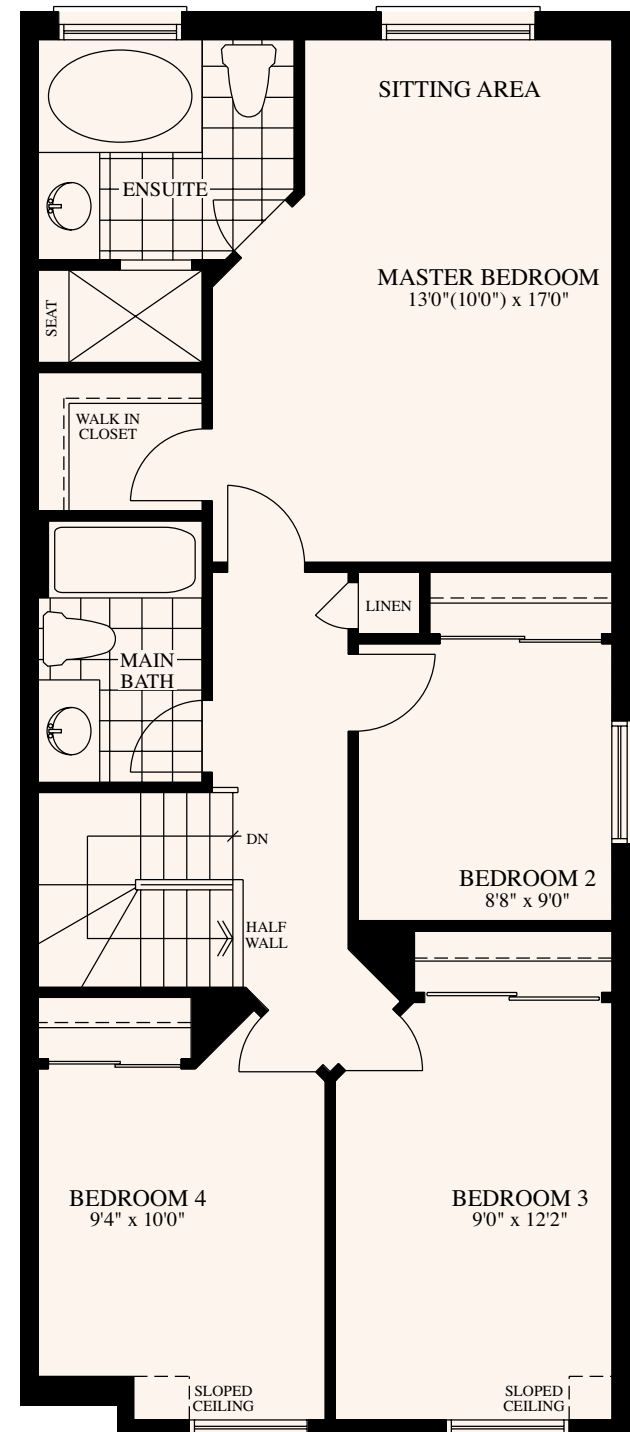
PARTIAL GROUND FLOOR FOR OPTIONAL FIREPLACE



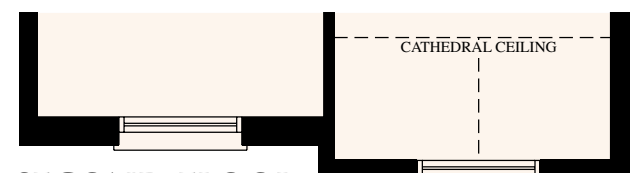
ALTERNATE GROUND FLOOR ELEVATION A END



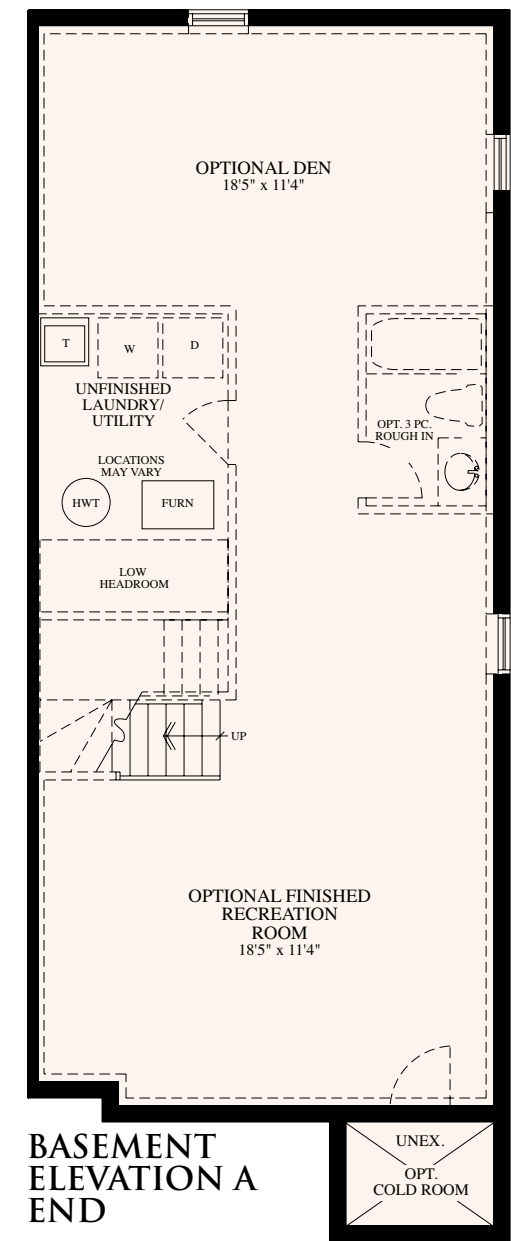
ALTERNATE GROUND FLOOR ELEVATION B END



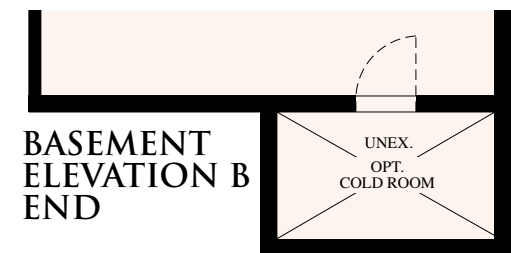
SECOND FLOOR ELEVATION A END



SECOND FLOOR ELEVATION B END



BASEMENT ELEVATION A END



BASEMENT ELEVATION B END

This elegant floor plan creates a dramatic interior with dining and living areas running across the width of the home. As you pass through the dining room, a large kitchen with a centre island opens onto a spacious family room with an abundance of light streaming in from an expansive window to the garden. The home features four big bedrooms including a master ensuite with soaker tub and separate shower.

All illustrations are Artist's Concept. All Plans and dimensions are approximate and subject to change without notice. Note that plans and room dimensions may vary according to elevation. E. & O. E. A2T-4

The Energy Star® mark is administered and promoted in Canada by Natural Resources Canada. Used with permission.



THE WILD PLUM II

TWO-STOREY - 1,854/1,842 (END) SQ. FT.
(WITH ADDITIONAL 759 SQ. FT. OF OPT. FINISHED BASEMENT)