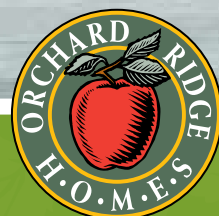


THE
JUNIPER
1,794 SQ. FT.

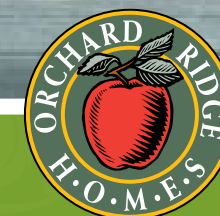


ARTIST'S CONCEPT

ELEVATION B

THREE STOREY

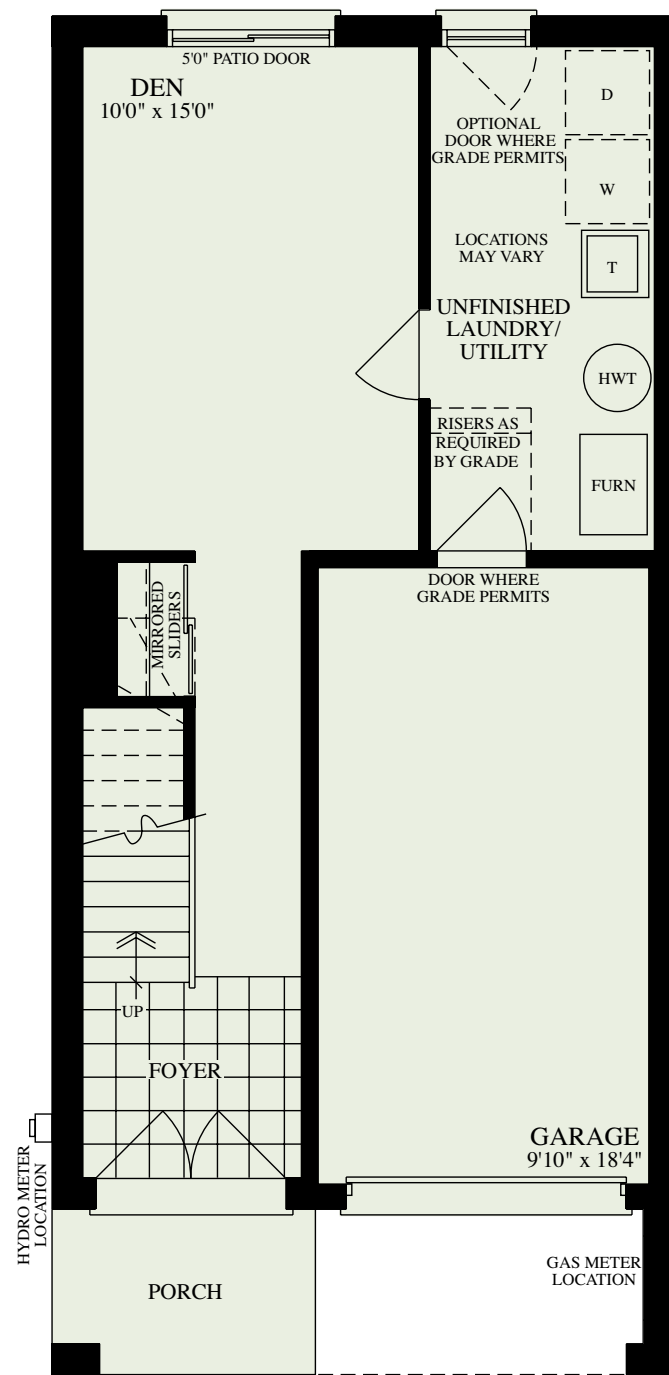
THE
JUNIPER
1,787 SQ. FT.



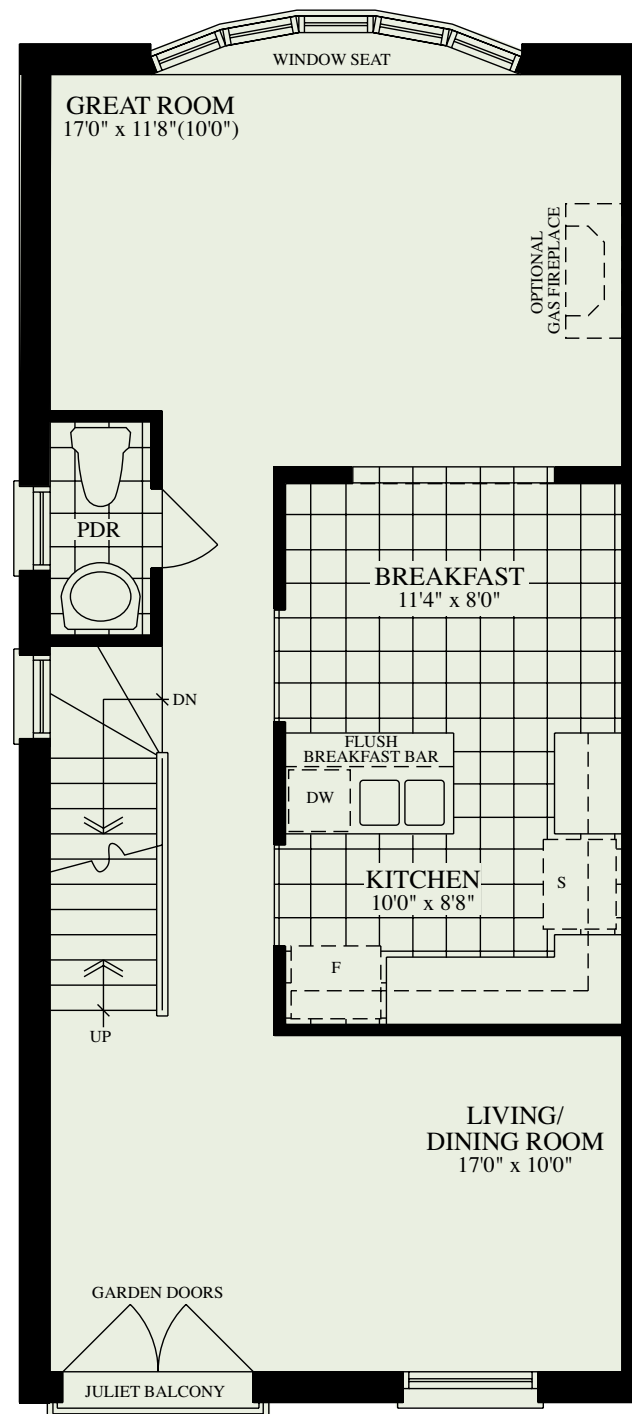
ARTIST'S CONCEPT

ELEVATION A

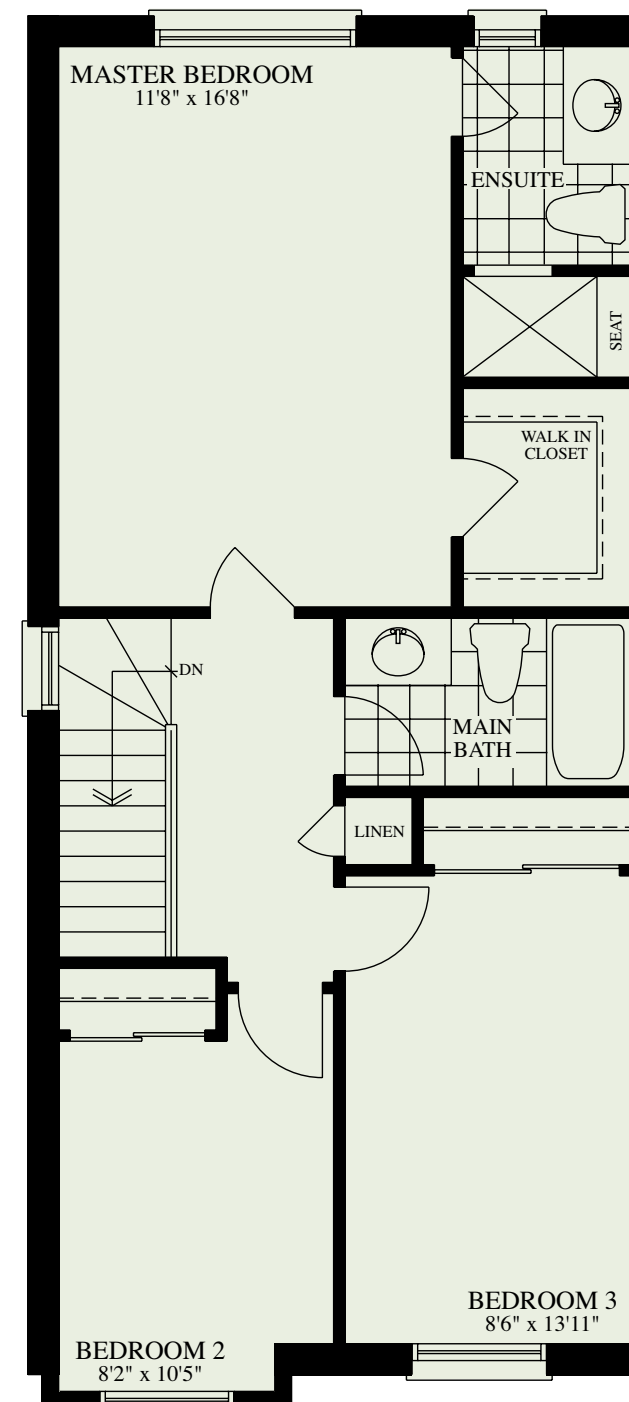
THREE STOREY



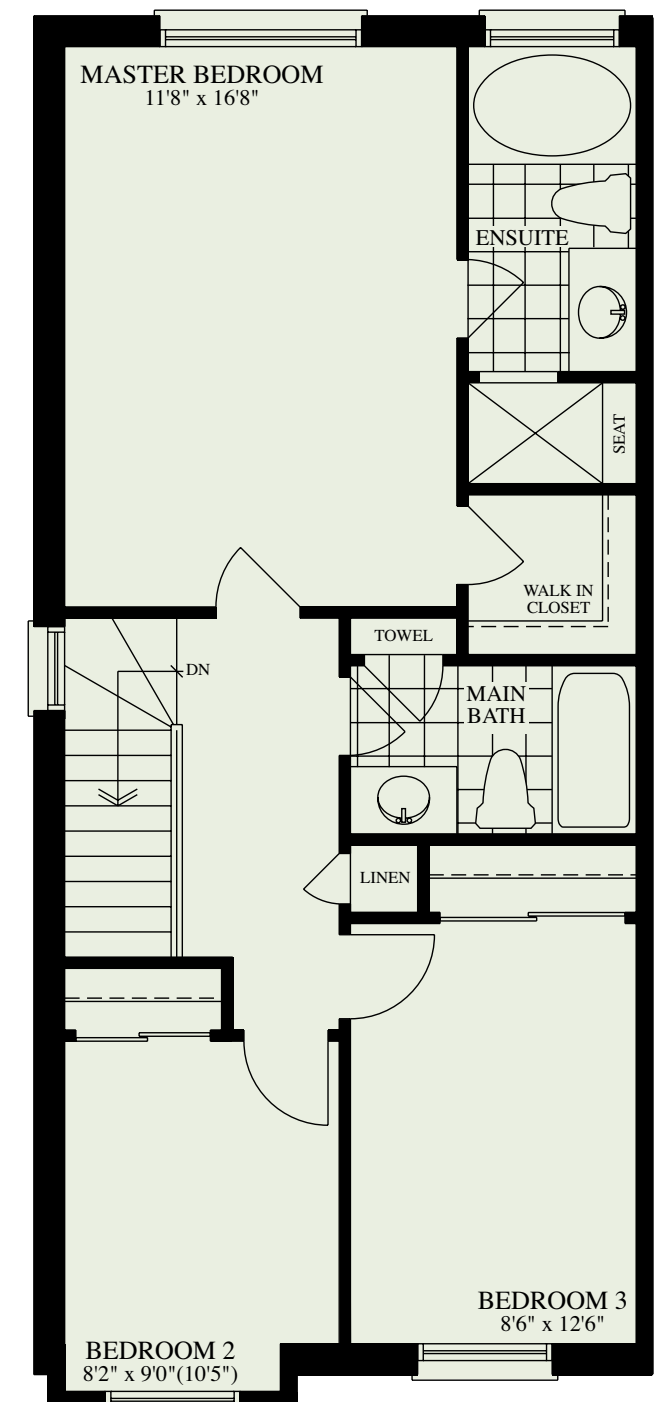
LOWER FLOOR ELEVATION A



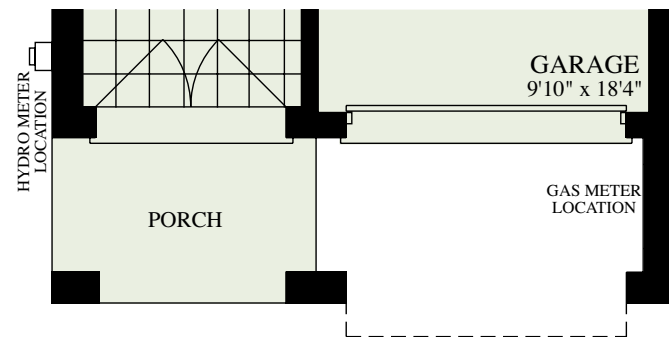
MIDDLE FLOOR ELEVATION A



UPPER FLOOR ELEVATION A



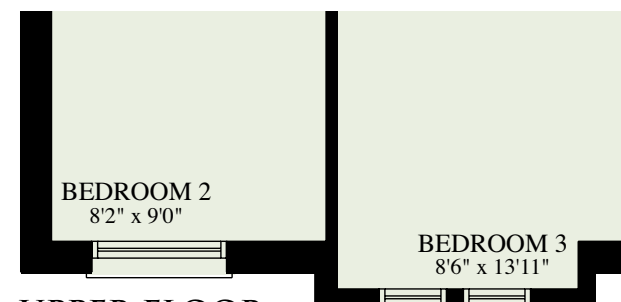
OPTIONAL UPPER FLOOR ELEVATION A



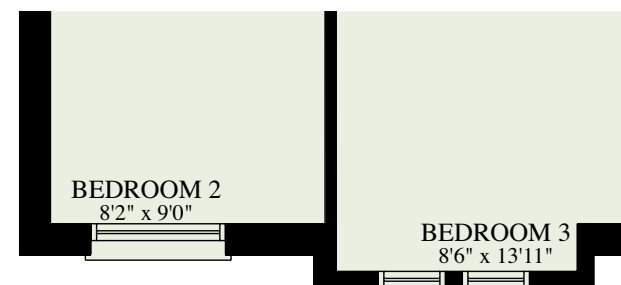
LOWER FLOOR ELEVATION B



MIDDLE FLOOR ELEVATION B



UPPER FLOOR ELEVATION B



OPTIONAL UPPER FLOOR ELEVATION B

The dramatic two-door entry of this distinctive home leads to the staircase heading up to the main floor or straight through to your own private den. The main floor features a central kitchen with a generous island and breakfast area, overlooking the large family room with a dramatic bay window. The spacious three-bedroom plan features a master bedroom with ensuite shower and a large walk-in closet.

All illustrations are Artist's Concept. All Plans and dimensions are approximate and subject to change without notice. Note that plans and room dimensions may vary according to elevation. E. & O. E. A3T-3



The Energy Star® mark is administered and promoted in Canada by Natural Resources Canada. Used with permission.

THE JUNIPER

THREE-STOREY - 1,787/1,794 SQ. FT.